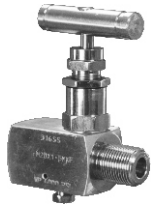


# Fitting accessories - Valves



## Needle valve VM-1

Material 316ss  
Medium temperature, working pressure – according to the graph on page III/ 7  
Ordering code:

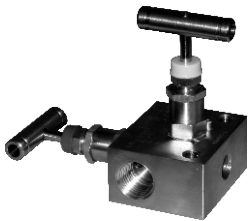
- Valve VM-1/M** (input M20×1.5 M, output M20×1.5 F, Teflon packing)
- Valve VM-1/G** (input G1/2" M, output G1/2" F, Teflon packing)
- Valve VM-1/graphite** (input M20×1.5 M, output M20×1.5 F, Graphite packing)
- Valve VM-1 oxygen** (valve designed for contact with oxygen; input M20×1.5 M, output M20×1.5 F, Teflon packing)



## Needle valve VM-1-R/R

Material 316ss  
Medium temperature, working pressure – according to the graph on page IV/ 3  
Input 1/2NPT F, output 1/2NPT F, Graphite packing, no vent port  
Ordering code:

- Valve VM-1-R/R/**\_\_\_\_\_
- 1 – Set of weldable stainless steel connectors (316ss)
  - 2 – Set of weldable steel connectors (K11562)
  - 3 – Set of connectors with Ø12 clamping ring
  - 4 – Set of connectors with Ø14 clamping ring



## 2-Valve Manifold VM-2

Material 316ss  
Medium temperature, working pressure – according to the graph on page IV/ 3  
Input 1/2NPT F, output 1/2NPT F, Teflon packing, vent port ¼ NPT F  
Ordering code:

- Valve VM-2-R/R/**\_\_\_\_\_
- Valve VM-1-R/R/**\_\_\_\_\_
- 1 – Set of weldable stainless steel connectors (316ss)
  - 2 – Set of weldable steel connectors (K11562)
  - 3 – Set of connectors with Ø12 clamping ring
  - 4 – Set of connectors with Ø14 clamping ring

Option  
.../NACE - NACE compliance



## 2-Valve Manifold VM-2-RM

Material 316ss  
Medium temperature, working pressure – according to the graph on page IV/ 3  
Input 1/2NPT F, output 1/2NPT F, Teflon packing, vent port ¼ NPT F  
Ordering code:

- Valve VM-2-RM/M** (input M20x1.5 M, output M20x1.5 F, Teflon packing, vent port ¼ NPT F)
- Valve VM-2-RM/G** (input G1/2" M, output G1/2" F, Teflon packing, vent port ¼ NPT F)
- Valve VM-2-RM/1/2NPT** (input 1/2"NPT M, output 1/2"NPT F, Teflon packing, vent port ¼ NPT F)

Option:  
.../NACE - NACE compliance

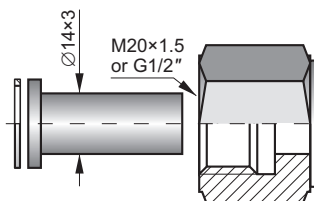


## Ball valve

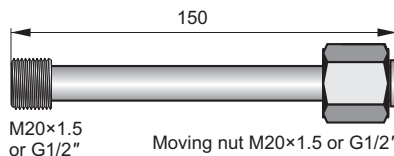
Material – H17N14M2 (316 ss)  
Medium temperature - 80°C  
Max pressure - 100 bar  
Input, output process connection: 1/2NPT F

Ordering code:  
**Valve VM-1/B**

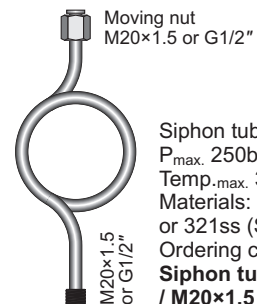
## Transmission tubes



Connector to weld  
Materials: 15HM – (SO) or 316Lss (S)  
Ordering code  
**RedSpaw – S or SO / M20×1.5 or G1/2"**



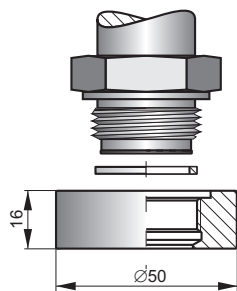
Impulse line  
P<sub>max.</sub> 100bar  
Materials: R35 – (SO) or 321ss (S)  
Ordering code  
**Impulse line – S or SO / M20×1.5 or G1/2"**



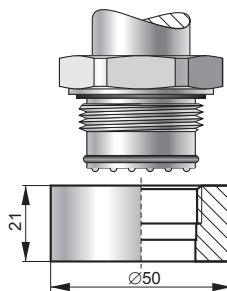
Moving nut  
M20×1.5 or G1/2"

Siphon tube  
P<sub>max.</sub> 250bar  
Temp<sub>D.max.</sub> 300°C  
Materials: R35 – (SO)  
or 321ss (S)  
Ordering code  
**Siphon tube – S or SO  
/ M20×1.5 or G1/2"**

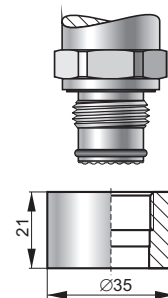
## Fitting sockets



Socket with M30×2 thread for fitting transmitters with a CM30×2 process connection  
Material – 316Lss  
Sealing – teflon  
Ordering code **Socket CM30×2**

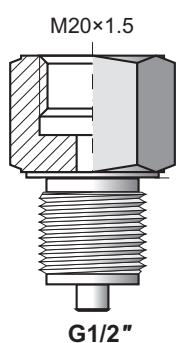


Socket with G1" thread for fitting transmitters with a CG1 process connection  
Material – 316Lss  
Sealing – teflon  
Ordering code **Socket CG1**

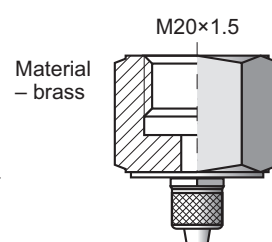


Socket with G1/2" thread for fitting transmitters with a CG1/2 process connection  
Material – 316Lss  
Sealing – teflon  
Ordering code **Socket CG1/2**

## Adapters

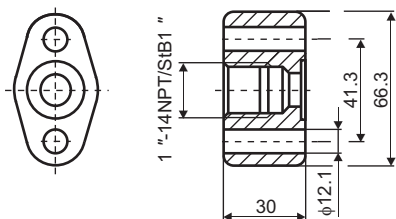
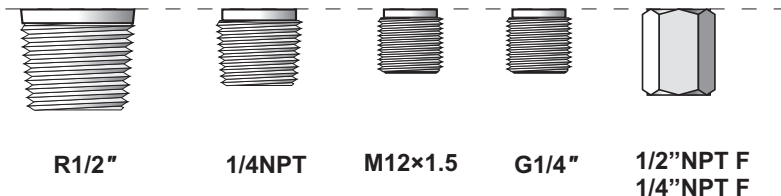


Material – 316Lss (S)  
Ordering code: **Red**



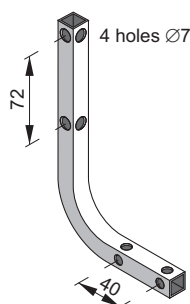
Material – brass

Ø6×1 elastic tube  
Ordering code: **RedØ6 – M**

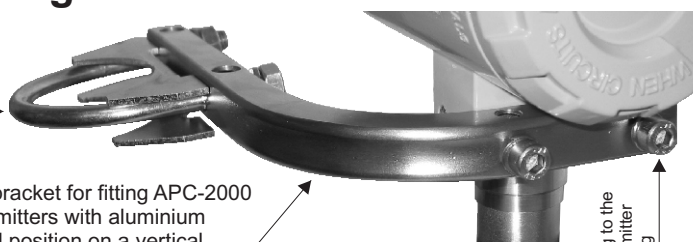


Adapter for differential pressure transmitters with C type process connection  
Material – 316Lss  
Ordering code: **Red-dP/1/2" NPT**

## Mounting brackets

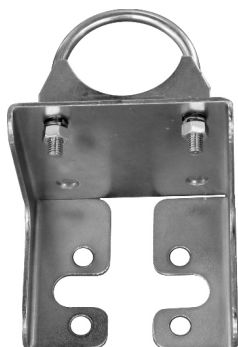


Clasp for fitting on a pipe

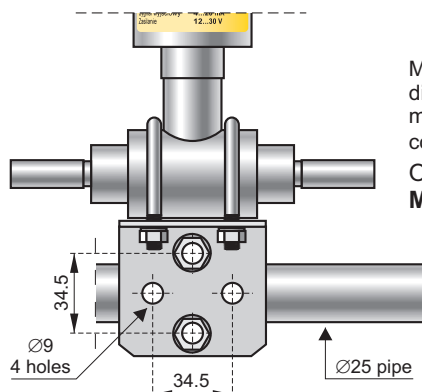


Universal mounting bracket for fitting APC-2000 and APR-2000 transmitters with aluminium casing in any desired position on a vertical or horizontal pipe (Ø30...Ø50)

Ordering code:  
**AL**:material zincd steel  
**AL(SS)**:material stainless steel



Mounting bracket for fitting differential pressure transmitters with C type process connections on a 2" pipe or on a wall  
Ordering code:  
**C-2"**: material zincd steel  
**C-2"(SS)**: material stainless steel



Mounting bracket for fitting differential pressure transmitters with P type process connections on a Ø25 pipe.  
Ordering code:  
**Mounting bracket FI 25**

# Notes

